



# TUFF CHARBROILER GRILLS

## YOUR COMMERCIAL GAS GRILL SPECIALIST!

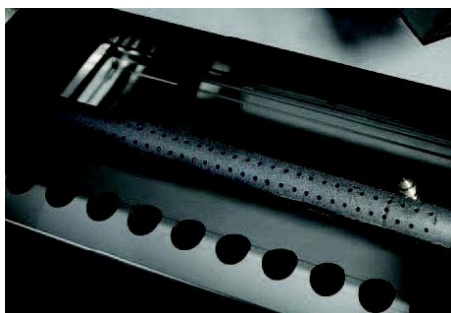
Champion Tuff Grills offers industry-leading gas-powered equipment starting with our Tuff Charbroilers, which give you the convenience of gas grilling combined with classic wood-smoked flavor. The Tuff Charbroiler's easy-to-use design combines versatility with operational simplicity, meaning you get the same great smoked taste with less hassle and

employee training needed. Our gas-powered grills are created with the highest quality of stainless steel and include carbon steel square grill grates, 4–12 burners, and 2–6 wood chip drawers. Enjoy the best of both modern convenience and delicious taste with top-of-the-line gas grills from Champion Tuff.



# TUFF CHARBROILER COUNTERTOP

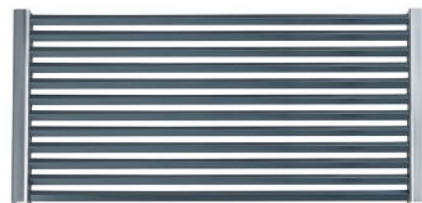
COUNTERTOP SPECS	TCC-30	TCC-36	TCC-48	TCC-60	TCC-72
DIMENSIONS (WXDXH IN.)	30 x 29 x 18	36 x 29 x 18	48 x 29 x 18	60 x 29 x 18	72 x 29 x 18
CHIP DRAWERS	2	3	4	5	6
INNER WALL CONSTRUCTION	- 10 guage stainless steel -				
OUTER BODY CONSTRUCTION	- 14 gauge stainless steel -				
BURNER BTU	20,000	20,000	20,000	20,000	20,000
NUMBER OF BURNERS	4	5	7	10	12
GAS FITTING REQUIREMENTS	- 3/4 inch -				



HD Gas Burner at 20,000 BTU



Wood Smoke Pans



Carbon Steel Square Grill Grates



## SS STANDARD FEATURES

- SS front plate shelf with 2 pan cutouts
- SS backsplash
- SS burner heat radiants
- SS wood smoke pans (1 per foot)
- Carbon steel 1/2" grill grates 6"wide



Unlike the Grills, the Tuff Charbroiler is entirely gas operated. Its easy-to-use design minimizes the need for training but still gives you all the versatility you need.

Easy-to-store wood-smoke enhancement gives your food that delicious flavor without the hassle of wood. This also means your kitchen doesn't need to be compliant with the same level of strict fire regulations, making installation easier.

TCC-30



## TUFF CHARBROILER GRILLS

*Industry-Leading, Gas-Powered Equipment*

### PRODUCT IMAGES



▲ Tuff Charbroiler TCC-30



▲ Tuff Charbroiler TCC-36



▲ Tuff Charbroiler TCC-48



▲ Tuff Charbroiler TCC-60



▲ Tuff Charbroiler TCC-72

# ADDITIONAL PARTS

---

1.



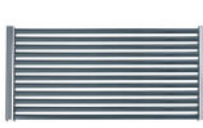
Burner Radiant

2.



Chip Drawer

3.



Square Grill  
Grates

4.



Drip Pan

5.



Gas Control Knob

6.



Gas Regulator

7.



Gas Valve

8.



Hot Top Plate

9.

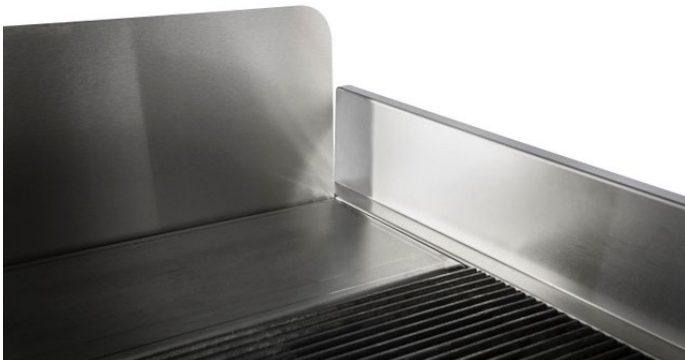


Wire Brush

# TUFF CHARBROILER ACCESSORIES

---

## SIDE SPLASH RISER



*12" SS Side Splash Guard*

## PLANCHA PLATE



*Model No. PP1224*

## STEEL GRILL GRATE



*Steel Grill Grate; 6" wide*



# STAINLESS STEEL OVERSHELF



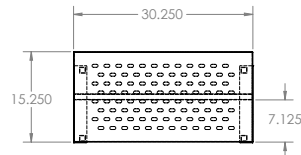
Stainless steel overshelves constructed of 304 grade, 16-gauge stainless steel tops, with stainless legs and crossrails.

Available for all Champion Tuff Grills.

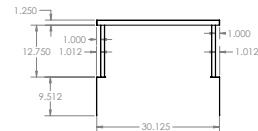
◀ *SS Overshelf; 12" SS Shelf, 30-72" wide*



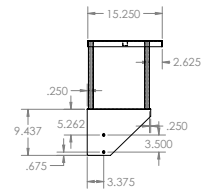
ASSY. VIEW



TOP VIEW



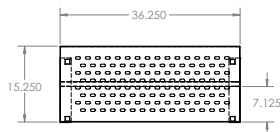
(INSIDE)  
FRONT VIEW



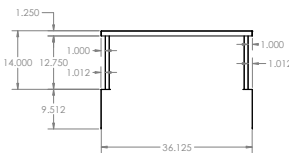
*Overshelf - 15.25 x 30.25*



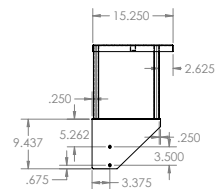
ASSY. VIEW



TOP VIEW



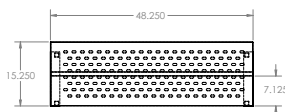
(INSIDE)  
(HOLD)  
FRONT VIEW



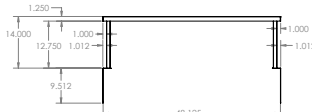
*Overshelf - 15.25 x 36.25*



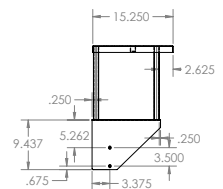
ASSY. VIEW



TOP VIEW



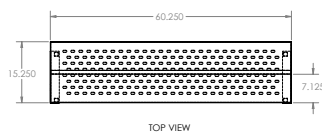
(INSIDE)  
FRONT VIEW



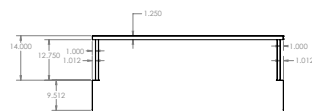
*Overshelf - 15.25 x 48.25*



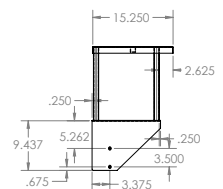
ASSY. VIEW



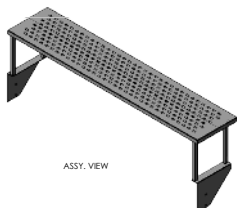
TOP VIEW



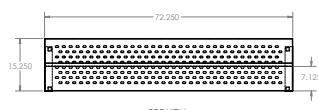
(INSIDE)  
FRONT VIEW



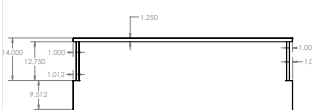
*Overshelf - 15.25 x 60.25*



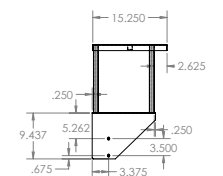
ASSY. VIEW



TOP VIEW

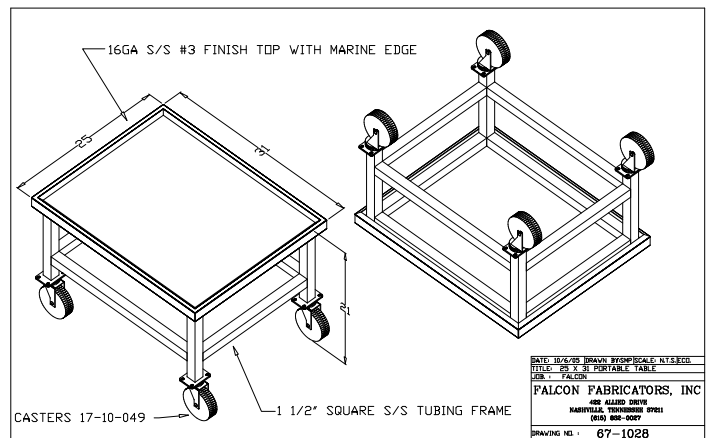


(INSIDE)  
FRONT VIEW



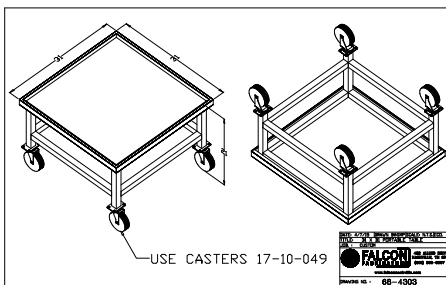
*Overshelf - 15.25 x 72.25*

# STAND ON CASTERS

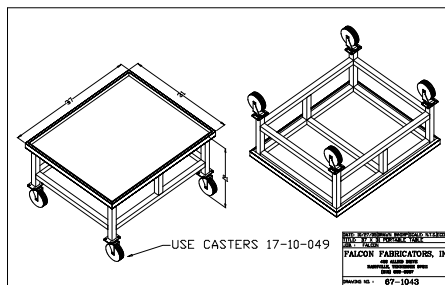


*Equipment Stand on Casters*

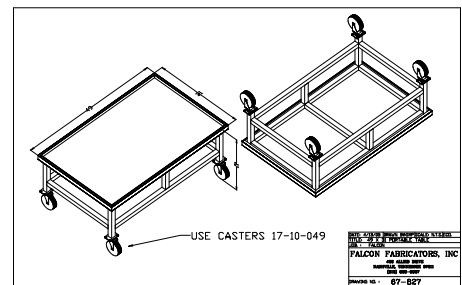
*Stand on Casters - 25 x 31 x 21*



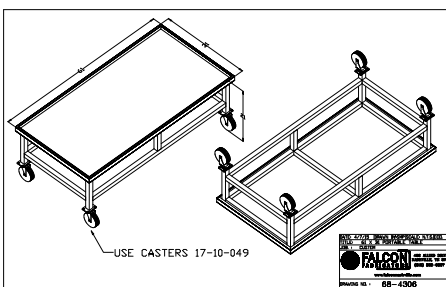
*Stand on Casters - 31 x 31 x 21*



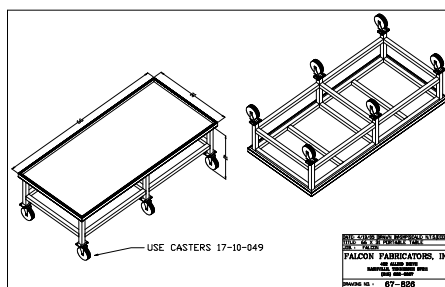
*Stand on Casters - 37 x 31 x 21*



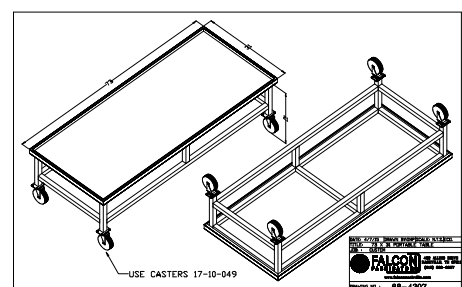
*Stand on Casters - 49 x 31 x 21*



*Stand on Casters - 61 x 31 x 21*



*Stand on Casters - 66 x 31 x 21*



*Stand on Casters - 73 x 31 x 21*



WWW.CHAMPIONTUFFGRILLS.COM // PO BOX 150631, FORT WORTH, TX 76108  
 (254) 728-3101 // CHAMPION TUFF GRILL BY SMOKEY MOUNTAIN GRILL LLC

