



CHAMPION TUFF GRILLS DEALER CATALOG



WWW.CHAMPIONTUFFGRILLS.COM // PO BOX 150631, FORT WORTH, TX 76108
(254) 728-3101 // CHAMPION TUFF GRILL BY SMOKEY MOUNTAIN GRILL LLC

CHAMPION GRILLS

PRECISION TEMPERATURE CONTROL & EVEN HEAT DISTRIBUTION

Champion Grills offer the best TEXAS-style wood-burning grilling available on the market today. Our indoor wood-burning Champion Grills control temperatures and evenly distribute heat resulting in lower fuel costs and consistent, optimally-prepared foods. The grills are constructed of double-walled stainless steel with firebrick that radiates heat back into the grill area, allowing you to cook at temperatures up to 1800°F while keeping the heat in the grill and not in the kitchen. Our multilayered insulation directs heat into the food, cooking it quickly

and with much greater control. Your kitchen will realize reduced fuel costs and your guests will enjoy a moist, flavorful entrée.

The unique construction of our grills' thick cast iron grates sears food quickly and directs the flow of excess juices. You can easily remove doors, ash boxes, and grate sections for easy cleaning. Never before has cooking and upkeep been so easy than with the durable stainless steel design of our efficient wood-burning grills.

PROUDLY MADE IN THE USA 

- 14GA stainless-steel exterior body and 7GA stainless-steel interior construction
- Drop-down front-loading fuel door
- Stainless-steel ash drawers with handles
- Superior firebrick heat retention
- 1800°F Insulation
- TEXAS-style grilling indoors
- 5" heavy-duty swivel / locking caster
- 22lb. 1.5" cast iron fire grates and 18lb. 1" cast iron grill grates
- 3 Year warranty on grill construction



▲ SS Overshelf

PROUDLY MADE IN THE USA 

CHAMPION GRILL SPEC SHEET

64" CHAMPION GRILL (CG 64)

| | |
|------------------------------------|--|
| DIMENSIONS (WXDXH IN.) | 64 x 30 x 40 |
| COOK SURFACE (HEIGHT IN.) | 36 |
| COOKING SURFACE (IN ²) | 1440 |
| TOP GRATES (6" X 24") | 10 |
| BOTTOM GRATES (6" X 19") | 9 |
| WEIGHT (LBS) | 1193 |
| ASH DRAWERS | 4 |
| FIRE BRICKS | 16 |
| HOOD CFM | 2765 |
| OUTER BODY CONSTRUCTION | 14-gauge Stainless Steel |
| INNER WALL CONSTRUCTION | 7-gauge Stainless Steel |
| INNER INSULATION | Fiber Frax Ceramic Fiber Rated at 2400°F |



- **Heavy Duty Cooking Grids:** Virtually indestructible, long lasting, holds smoke flavor perfectly around the food, concentrates heat exactly where it's needed
- **Sauce Pan Shelf:** Have your sauces, butters and flavors at your fingertips



▲ SS Overshelf

PRODUCT IMAGES

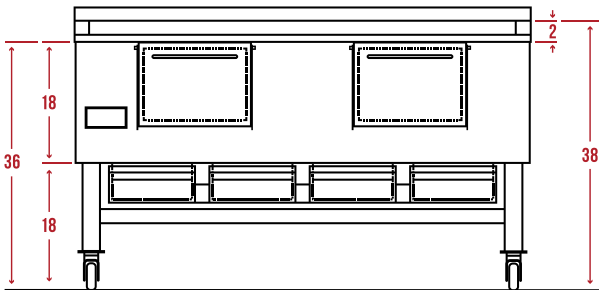


▲ *Champion Grill 64*

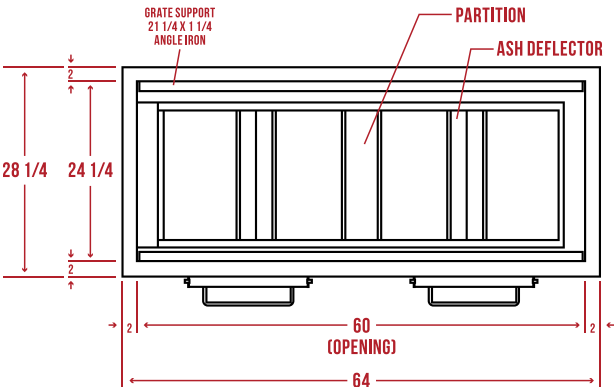
64" CHAMPION GRILL



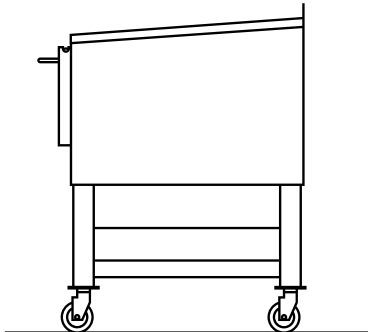
- Product Weight: 1110lbs
- F.o.b. Nashville, Tn
- Stainless Steel Front Plateshelf
- Saucepan Shelf



FRONT ELEVATION



PLAN VIEW



END VIEW

TUFF GRILLS

DURABLE, ENERGY-EFFICIENT POWERHOUSE GRILLS

Nothing tastes better than the flavor of a wood fired flavor on steaks, seafood, chicken, pork, or any exotic meat. Tuff Grills are your best high-heat, wood-fired grill option available. With a maximum cook temperature of 1100°, Tuff Grills can add a lot of heat to the kitchen. The patented Cool Jacket technology keeps the heat where you want it providing an amazingly comfortable workplace for your chefs. Additionally, you don't need a boy scout

to keep the fire burning with the built-in gas lighter. The uniquely durable design is energy efficient and the construction delivers long-term performance and low maintenance costs. Virtually indestructible cast iron grill grates round out the structural integrity of every Tuff Grill. Available in a variety of sizes, there's a Tuff Grill that will fit your commercial kitchen like a glove.

PROUDLY MADE IN THE USA 

- **Cool Jacket Technology:** Cool to the touch on the outside, no fire bricks to replace, low maintenance costs
- **Heavy Duty Cooking Grids:** Virtually indestructible, long lasting, holds smoke flavor perfectly around the food, concentrates heat exactly where it's needed
- **Gas Log Lighter:** Fast and easy lighting, no boy scouts required to keep the fire going
- **Sauce Pan Shelf:** Have your sauces, butters and flavors at your fingertips



▲ Tuff Grill TG 48

TUFF GRILL SPECS

| TUFF GRILL SPECS | TG 36 | TG 48 | TG 60 | TG 72 |
|----------------------------|--------------------------|------------------|------------------|------------------|
| DIMENSIONS (W X D X H IN.) | 36 x 33.5 x 36.5 | 48 x 33.5 x 36.5 | 60 x 33.5 x 36.5 | 72 x 33.5 x 36.5 |
| TOP GRATES (6" X 24") | 5 | 7 | 9 | 11 |
| BOTTOM GRATES | 4 | 6 | 8 | 10 |
| WEIGHT (LBS) | 602 | 806 | 958 | 1154 |
| BUILT-IN LOG LIGHTER BTU | 15,000 | 25,000 | 25,000 | 30,000 |
| OUTER BODY CONSTRUCTION | 14-Gauge Stainless Steel | | | |
| INNER WALL CONSTRUCTION | 10-Gauge Stainless Steel | | | |
| GAS FITTING REQUIREMENTS | 1/2 inch | | | |



PRODUCT IMAGES



▲ Tuff Grill TG 36



▲ Tuff Grill TG 48



▲ Tuff Grill TG 60



▲ Tuff Grill TG 72

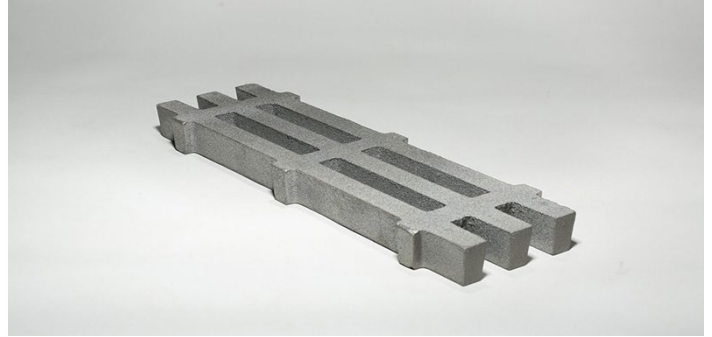
PARTS & ACCESSORIES FOR WOOD FIRED GRILLS

TOP GRATE



Top grill grate, TG624 6" x 24"

BOTTOM GRATE



Cast iron bottom fuel grate, FG 6" x 19"

FIRE BRICKS



*Fire bricks, fire box grills
ONLY FB 612 6" x 12"*

SS HOLDING SHELF



SS Overshelf insert 12 / 24"

HOT TOP PLATE



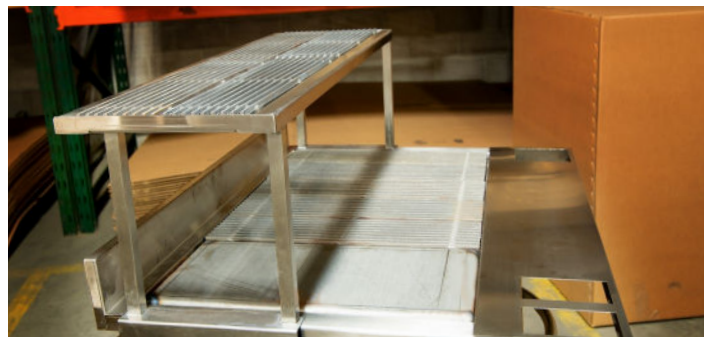
Plancha Plate, PP 1224 12" x 24"

FRONT PLATE SHELF



SS Front plate shelf with black pan inserts

OVERSHELF SS SHELF



SS Overshelf with Cast Iron Grill Grates, 34-72"

TUFF CHARBROILER GRILLS

INDUSTRY-LEADING, GAS-POWERED EQUIPMENT

Champion Tuff Grills offers industry-leading gas-powered equipment starting with our Tuff Charbroilers, which give you the convenience of gas grilling combined with classic wood-smoked flavor. The Tuff Charbroiler's easy-to-use design combines versatility with operational simplicity, meaning you get the same great smoked taste with less hassle and

employee training needed. Our gas-powered grills are created with the highest quality of stainless steel and include carbon steel square grill grates, 4–12 burners, and 2–6 wood chip drawers. Enjoy the best of both modern convenience and delicious taste with top-of-the-line gas grills from Champion Tuff.

PROUDLY MADE IN THE USA 

SS STANDARD FEATURES

- SS gas burners
- SS front plate shelf with 2 pan cutouts
- SS backsplash
- SS burner heat radiants
- SS wood smoke pans (1 per foot)
- Carbon steel 1/2" grill grates 6" wide

Unlike the Grills, the Tuff Charbroiler is entirely gas operated. Its easy-to-use design minimizes the need for training but still gives you all the versatility you need.

Easy-to-store wood-smoke enhancement gives your food that delicious flavor without the



▲ Tuff Charbroiler TCC-30

hassle of wood. This also means your kitchen doesn't need to be compliant with the same level of strict fire regulations, making installation easier.

PROUDLY MADE IN THE USA 

TUFF CHARBROILER GAS GRILLS

| COUNTERTOP SPECS | TCC-30 | TCC-36 | TCC-48 | TCC-60 | TCC-72 |
|--------------------------|------------------------------|-----------------|-----------------|-----------------|-----------------|
| DIMENSIONS (WxDXH IN.) | 30 x 29 x 18 | 36 x 29 x 18 | 48 x 29 x 18 | 60 x 29 x 18 | 72 x 29 x 18 |
| CHIP DRAWERS | 2 | 3 | 4 | 5 | 6 |
| INNER WALL CONSTRUCTION | - 10 guage stainless steel - | | | | |
| OUTER BODY CONSTRUCTION | - 14 gauge stainless steel - | | | | |
| BURNER BTU | 20,000 | 20,000 | 20,000 | 20,000 | 20,000 |
| NUMBER OF BURNERS | 4 | 5 | 7 | 10 | 12 |
| GAS FITTING REQUIREMENTS | - 3/4 inch - | | | | |



PRODUCT IMAGES



▲ Tuff Charbroiler TCC-30



▲ Tuff Charbroiler TCC-36



▲ Tuff Charbroiler TCC-48



▲ Tuff Charbroiler TCC-60



▲ Tuff Charbroiler TCC-72

ACCESSORIES FOR GAS GRILLS

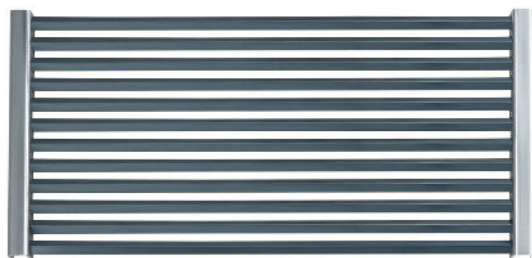
Compatible with Tuff Charbroilers

SIDE SPLASH RISER



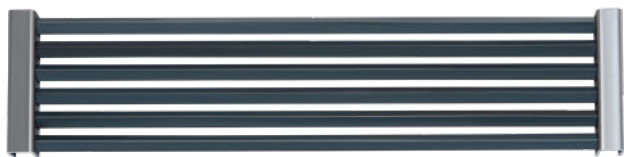
Side Splash Riser; 12" SS Side Splash Guard

SEAFOOD GRILL GRATE



Seafood Grill Grate; 12" wide

STEEL GRILL GRATE



Steel Grill Grate; 6"

STAND ON CASTERS



Equipment Stand on Casters

OVERSHELF



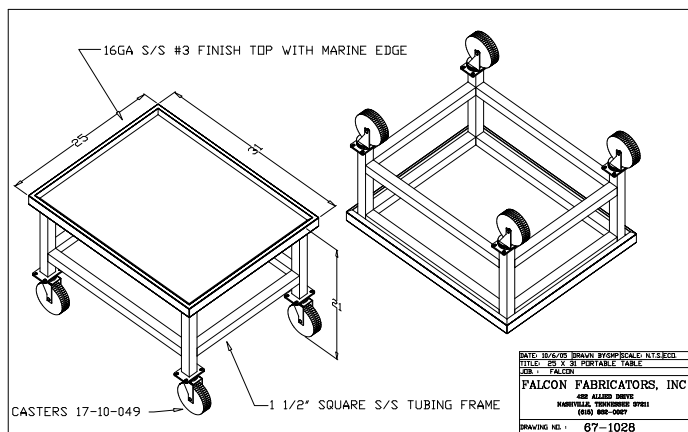
SS Overshelf; 12" SS Shelf, 30-72" wide

HIGH SHELF

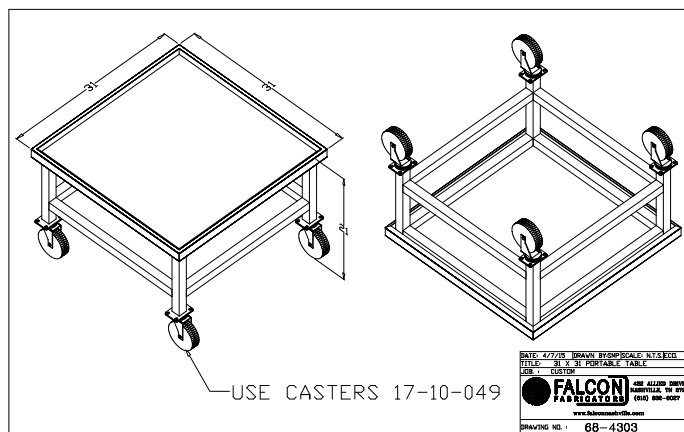


SS High Shelf; 12" SS Shelf, 18" High

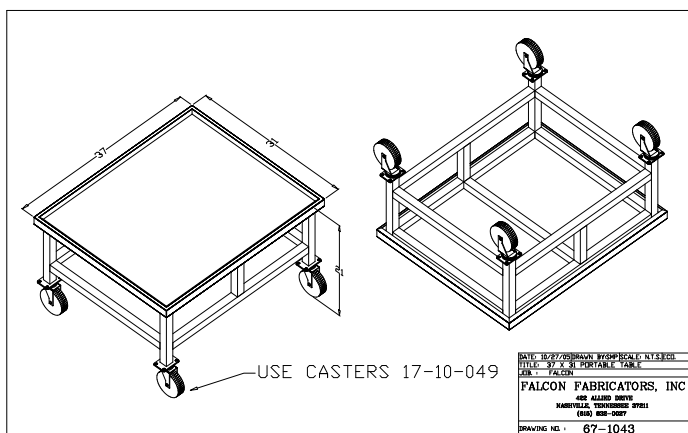
STAND ON CASTERS



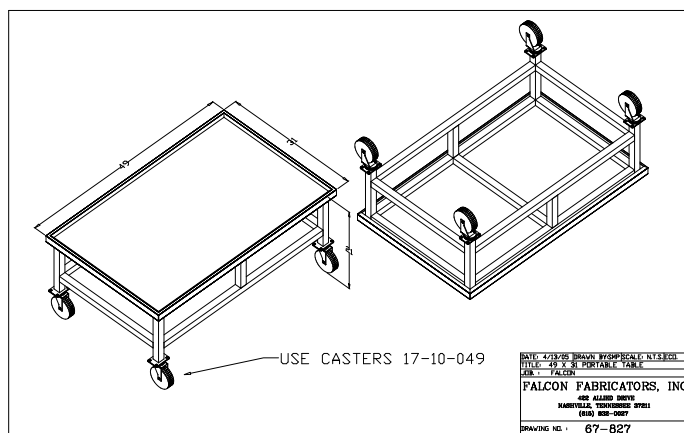
Stand on Casters - 25 x 31 x 21



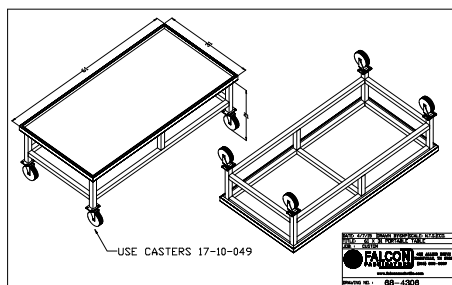
Stand on Casters - 31 x 31 x 21



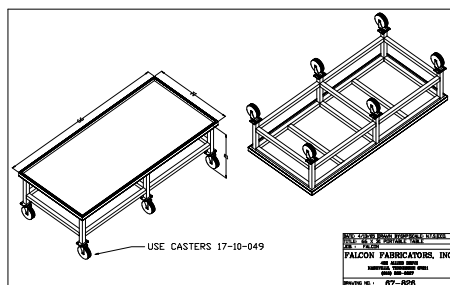
Stand on Casters - 37 x 31 x 21



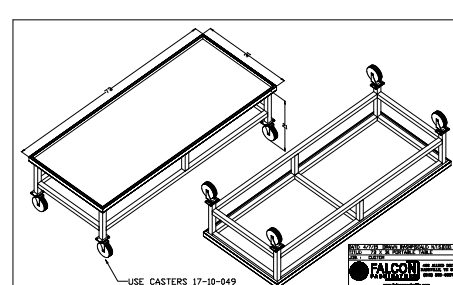
Stand on Casters - 49 x 31 x 21



Stand on Casters - 61 x 31 x 21



Stand on Casters - 66 x 31 x 21



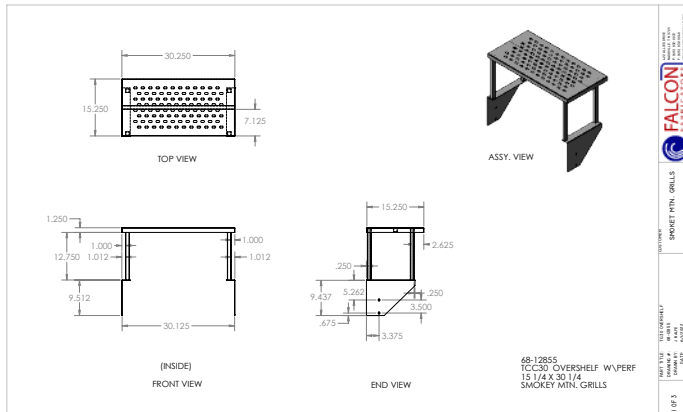
Stand on Casters - 73 x 31 x 21



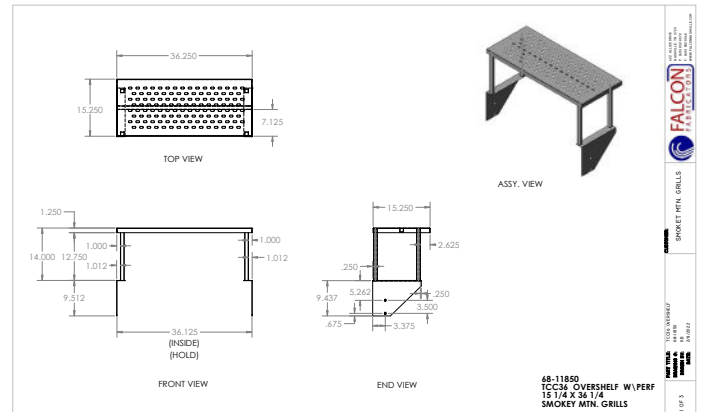
Stainless steel worktables constructed of 304 grade, 16-gauge stainless steel tops, with stainless legs, stainless crossrails, and swivel casters. Available for all Tuff Charbroiler models.

◀ ES 37 - 37" Equipment Stand on Casters

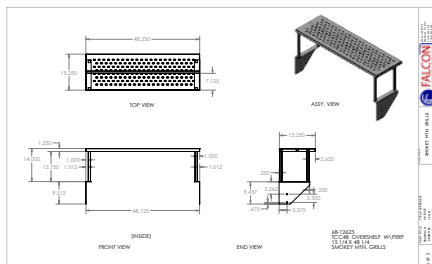
SS OVERSHELF



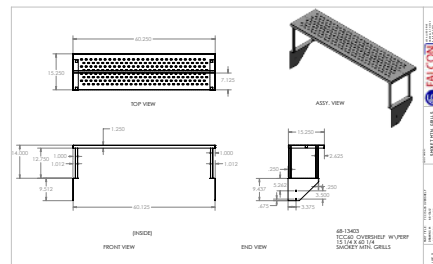
Overshelf - 15.25 x 30.25



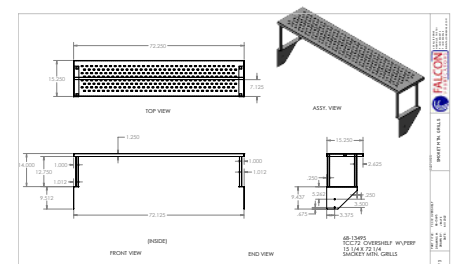
Overshelf - 15.25 x 36.25



Overshelf - 15.25 x 48.25



Overshelf - 15.25 x 60.25



Overshelf - 15.25 x 72.25



Stainless steel overshelves constructed of 304 grade, 16-gauge stainless steel tops, with stainless legs and crossrails.
Available for all Champion Tuff Grills.

◀ TCC 36 - 36" Stainless Steel Overshelf



(254) 728-3101
PO BOX 150631
FORT WORTH, TX 76108

WWW.CHAMPIONTUFFGRILLS.COM
CHAMPION TUFF GRILL BY
SMOKEY MOUNTAIN GRILL LLC

